



Modern Hydraulic LLC

2000 ton FARREL [Stock Number 145]

Construction	4 Posts
Stroke	29"
Daylight Opening	41"
Bed & Slide Working Area	96" x 96" or 61" L-R x 133-1/2" F-B
Distance Between Posts	97" L-R x 61" F-B
Bed & Slide Overall	133-1/2" L-R x 97" F-B, "T" Slotted
Rams	(1) 38" Dia. & (2) 19-3/4" Dia. @ 2290 PSI
Pullbacks	(2) 10" Dia., 175 Tons Lifting Capacity
Working Height	Floor to Top of Bed 30"
Slide	Fully Guided
Prefill Valve	12" Approx.

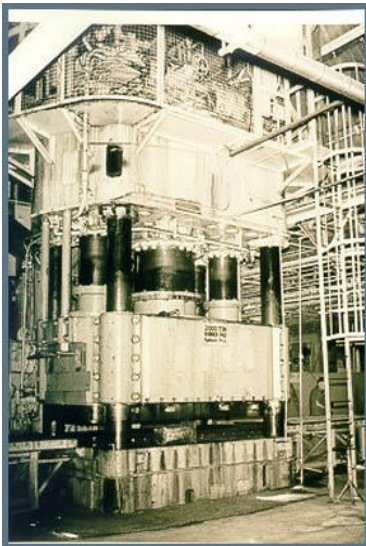
Hydraulics

Mounted on the Press Crown. (1) 100 HP 220/440/3/60 Motor
Driving Northern 90 GPM Pump.

Controls Push Button

Overall Height 24'6" Approx. x 11'2" x 8'2"

F.O.B. Montclair, California



Visit our website at www.modernhydraulic.com