



Modern Hydraulic LLC

14000 ton UNITED [Stock Number 155]

Construction	4 Posts, 34" Dia. Each, All Steel
Stroke	10' (120")
Daylight Opening	22' (264"), Shut Height 12' (144")
Bed Area	18'2" L-R x 16'8" F-B
Distance Between Posts	18'2" L-R X 8' F-B
Ram Slide Fully Guided	18'2" L-R X 11'6" F-B
Main Ram	(2) 63" Each @ 4500 PSI
Pullbacks	2) 26" x 13", 1800 Tons Stripping @ 4500 PSI
Working Height	Floor level with 21'1" Pit

Hydraulics

1250 HP, 2 Ea. 6600 Volts, 3/60, 725 RPM Motors Driving Four
Worthington Triplex Pumps, 400 GPM Each, 6 A.O. Smith Accumulators

Press Speeds I.P.M. 720, 180, 720

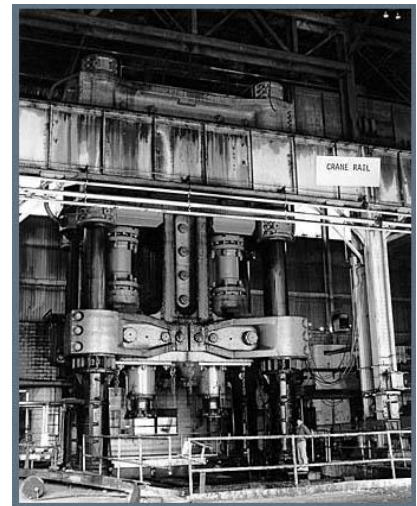
Press Complete With (1) Hydraulic Sliding Tooling Bed, 18'2" Square, Extending 40' From The Press Center, 32' Stroke.

Overall

Height 77'10", 56'9" Above Floor, 21'1" Below Floor, 32' L-R x 20'6" F-B

Total Weight 11,900,000 Lbs. Approx.

On Location: Niagara Falls, New York



Visit our website at www.modernhydraulic.com