



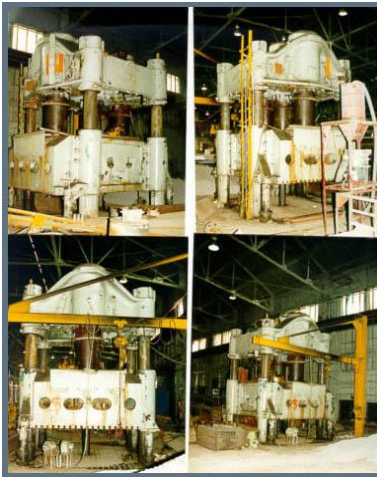
# Modern Hydraulic LLC

## 1500 ton CHAMBERSBURG [Stock Number 2676]

Construction	4 Posts
Stroke	42"
Daylight opening	84" Approx.
Bed working area:	15' x 10'2"
Distance between posts	7'10" L-R x 10'2" F-B
3 Rams	29" Dia. @ 1500 PSI
Slide	Fully Guided, "T" Slotted
4 Push Up Rams	
Total Weight	666,500 Lbs. Approx.

\*Note: Preliminary Specifications, Subject to Revision

ON LOCATION ---- Altoona, Pennsylvania



Visit our website at [www.modernhydraulic.com](http://www.modernhydraulic.com)