



Modern Hydraulic LLC

2000 ton BLISS [Stock Number 4629]

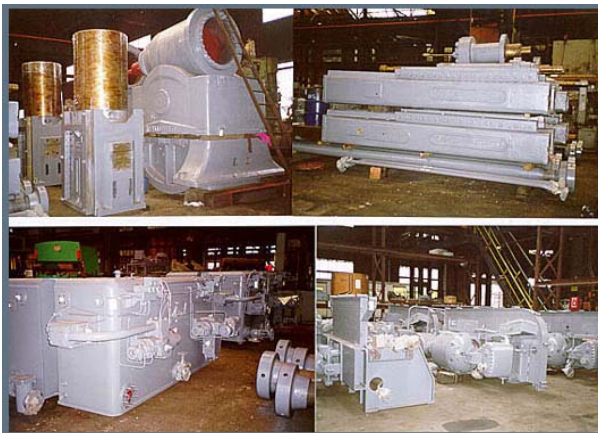
Model	#HS-200055-66
Construction	Tie rod, side housing type
Stroke	36"
Daylight opening	84"
Slide area	48" L-R x 48" F-B
Bed area	55" L-R x 66" F-B, with ejector in base (20" stroke)

Approximate speeds
Rapid advance: 600 IPM
Pressing: 60 IPM
Rapid return: 600 IPM

Motors	(2) G.E. 250 HP, 440 volts, 875 RPM.
Pumps	(4) Vickers Model PV-2125-HEAB-10-S267
Electrics	440 volts, 3 phase, 60 cycles

Approximate weight 314,700 lbs.

F.C.A., loaded on trucks, Philadelphia, Pa



Visit our website at www.modernhydraulic.com