



Modern Hydraulic LLC

225 ton CLEARING [Stock Number 5255]

Model	H-225-54
Construction	side housing type
Stroke	76"
Shut height	35"
Daylight opening	111"
Bed area	54" L-R x 40" F-B
Ram diameters	(1) 10", (2) 6"

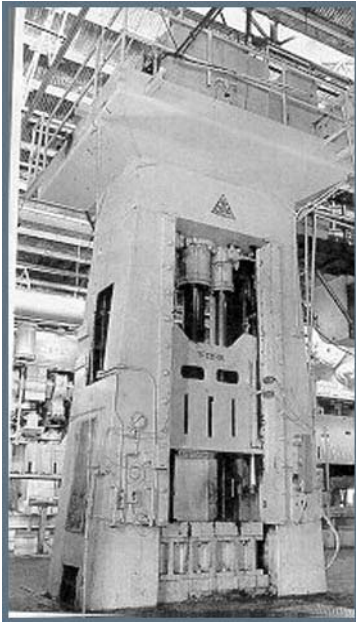
Gib guided

Power Unit:

Model DX15025 Oilgear hydraulic pump driven by 150 HP motor, 860 RPM, 480 volts.

Approximate weight 95,000 lbs

On location: Montclair, California



Visit our website at www.modernhydraulic.com