



Modern Hydraulic LLC

2200 ton FARREL [Stock Number 5673]

Construction	4 posts, 13" diameter each
Stroke	36"
Daylight opening	60"
Distance between posts	92" L-R x 61" F-B
Bed working area	92" L-R x 96" F-B or 61" x 133" end loading
Ram & bed	"T" slotted
Overall bed size	133" x 96"
Hydraulics	150 HP main motor, 750 RPM
Hydraulic oil reservoir in crown	approx. 600 gallon capacity

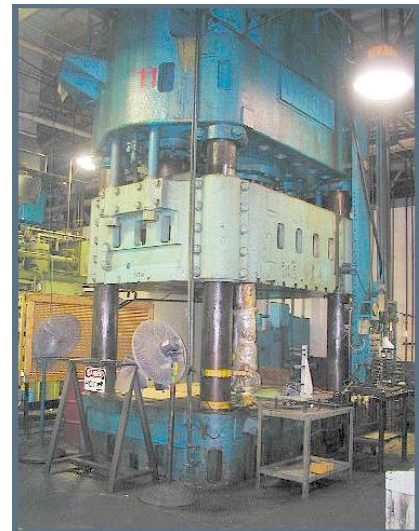
Approximate Speeds
Closing speed 12 IPM;
traverse speed 130 IPM;
return speed 130 IPM.

Approximate overall dimensions
146" L-R x 110" F-B x 26' 9" total height, (26'9" above floor with 30" below floor).

Approximate weight 150 tons

* Preliminary specifications -- Subject to confirmation upon inspection *

F.C.A., loaded on trucks, Lester, Pennsylvania.



Visit our website at www.modernhydraulic.com