



# Modern Hydraulic LLC

## 2000 ton FARREL [Stock Number 2906]

Construction	4 Posts
Stroke	29"
Daylight Opening	41"
Bed & Slide Working Area	96" x 96"
Distance Between Posts	97" L-R x 61" F-B
Bed & Slide	"T" Slotted
Rams	(1) 38" Dia. & (2) 19-3/4" Dia. @ 2290 PSI
Pullbacks	(2) 10" Dia., 175 Tons Lifting Capacity
Working Height	Floor to Top of Bed 30"
Slide	Fully Guided
Prefill Valve	12" Approx.

### Hydraulics

Mounted on the Press Crown. (1) 100 HP 220/440/3/60 Motor , Driving Northern 90 GPM Pump.

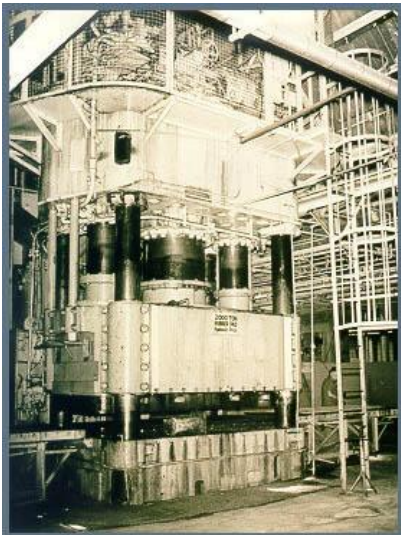
### Controls

Push Button

### Overall

Length 24'6" Approx. x 11'2" x 8'2"

F.C.A., loaded on trucks, Montclair, CA



Visit our website at [www.modernhydraulic.com](http://www.modernhydraulic.com)