



Modern Hydraulic LLC

350 ton ACCUDYNE [Stock Number 5264]

Model A0042-MA-2, New 1990
Construction 4 post
Stroke 24"
Daylight opening 26" approximately (adjustable)

Bed working area

Platens: (2), 48" L-R x 36" F-B x 4" thick, electrically heated.
Distance between posts: 57" L-R x 20-1/2" F-B.

Main ram 20" diameter
Pulldown cylinders (2)
Slide fully guided
Hydraulics 60 HP drive motor

Speeds (approx):

Rapid advance 265 IPM / pressing 20 IPM / return 265 IPM

Controls

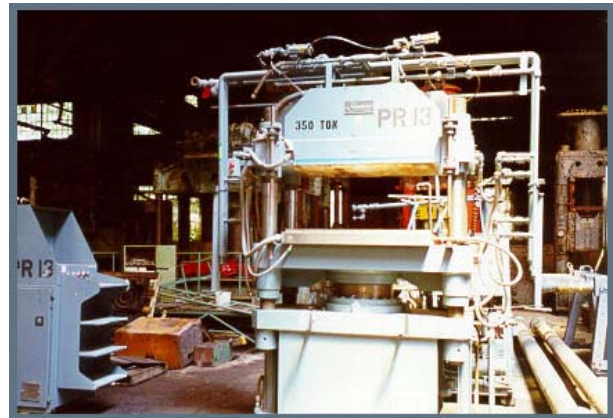
adjustable tonnage, manual dwell time, etc..

Approximate height

11' total overall, set up in plant with 6' above floor level and 5' below,
if used floor standing, without pit: 68" working height

Note: Preliminary specifications - to be confirmed at time of inspection.

F.C.A., loaded on trucks, Philadelphia, Pa



Visit our website at www.modernhydraulic.com