



Modern Hydraulic LLC

200 ton WATSON STILLMAN [Stock Number 6451]

Construction	4 posts
Main ram	16" diameter x 12" stroke
Floating platen with (2) 4" x 12" stroke	
Double acting cylinders	
Shut height of floating platen in up position	4"
Daylight opening	18-1/2"
Moving platen	21-1/2" L-R x 21" F-B
Clearance between tie rods	21-1/2" L-R x 10" F-B
Lower bolster	20" L-R x 18" F-B x 2" thick
Upper bolster	20" L-R x 18" F-B x 1-1/2"

Self contained power unit

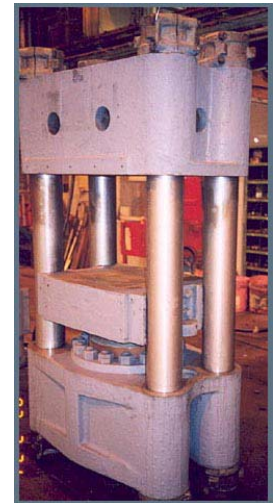
High/low system with push button controls, including 0 - 30 minute timer.
10 HP motor, 220/440 volt, 3/60 cycles. Double end motor drives Vickers vane pumps:
Model #VK 461-L.H. and #VK 2305-G3 RH ROT

Speeds (estimated)

Main ram: 70 IPM rapid advance / 3 IPM pressing @ 200 tons.
Floating platen: 70 IPM advance / 25 IPM @ 25 tons.

Working height	50" (No pit required)
Approximate overall dimensions	
	48" L-R x 54" F-B x 84" overall height
Approximate weight	8,000 lbs.

F.O.B., loaded on truck, Philadelphia, Pennsylvania



Visit our website at www.modernhydraulic.com