



# Modern Hydraulic Technology

division of Newark Special Technology, Inc.

## 1600 ton BALDWIN SOUTHWRK [Stock Number 181]

With 400 Ton Cushion

Construction	4 Posts, 11-1/8" Diameter Each
Stroke	50"
Daylight Opening	86"
Bed Working Area	59-3/4" L-R x 92" F-B
Distance Between Posts	59-3/4" L-R x 59-3/4" F-B
Bed & Slide "T" Slotted	
Main Ram	44-7/8" Dia. @ 2000 PSI, 1600 Tons
Cushion Stroke	30", Ram 25-7/8" @ 1500 PSI
Pullbacks	(2) 115 Ton Stripping Force, (2) 9-7/8" Each
Knockout in Moving Platen	14.7 Tons, 3" Stroke
Prefill Valve	10"

### Hydraulics

Mounted on Press Crown & Aux. Floor Mount, 200 HP, 440/3/60 Motor  
Driving (2) Oilgear 150-25 Pumps.

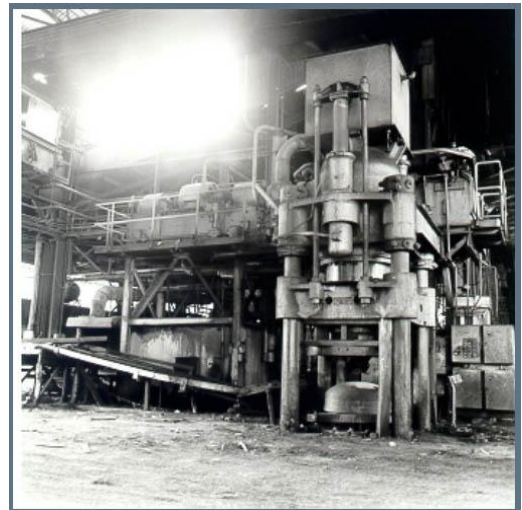
### Speeds

I.P.M. Main Ram 330/31/330  
Blankholder Pressing 150  
Cushion Pressing 95, Return 500

Height Above 12' Pit, 22' Above Floor x 11'6" x 8'

Total Weight 250,000 Lbs. Approx.

F.C.A. LOADED (trucks) Philadelphia, Pa



Visit our website at [www.modernhydraulic.com](http://www.modernhydraulic.com)