



# MODERN HYDRAULIC TECHNOLOGY

DIVISION OF NEWARK SPECIAL TECHNOLOGY, INC.

## 1500 ton ELMES (REXNORD) [Stock Number 4630]

Model	#7979
Construction	Tie rod, side housing type
Stroke	24"
Daylight opening	71-3/4"
Bed area	52" x 52"
Guided ram	
Working Pressure	2800 PSI
Main ram speeds	630 IPM advance & return 33 IPM pressing

### Hydraulics

- (2) Vickers PV-2080-F-EAB-10 pumps
- (1) Vickers V-135, 18.8 GPM @ 1200 RPM
- (1) Vickers V-2334, 18 GPM @ 1200 RPM

### Motors

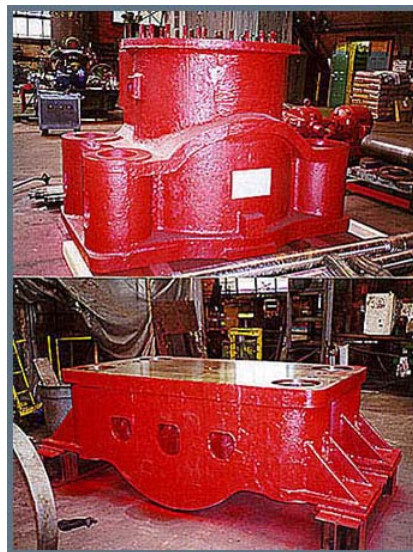
- (1) 150 HP, 900 RPM, 440 volts, 3 phase, 60 cycles, A.C.
- (1) 20 HP, 1200 RPM, 220/440 volts, 3 phase, 60 cycles
- (1) 3 HP, 1200 RPM, 220/440 volts, 3 phase, 60 cycles

Approximate overall height 23'7" above floor; 11-1/2" below floor

Estimated weight 226,000 lbs.

F.C.A., loaded on trucks, Philadelphia, Pa

NOTE: EX-GOV'T STORAGE-SAW  
LITTLE USE. EXCELLENT CONDITION



Phone (215) 467 9000 • Fax (215) 467 9220  
1900 Kittyhawk Ave., Building 57 Bay – A, Philadelphia, PA 19112, USA  
Visit our website at [www.hydraulicpresses.com](http://www.hydraulicpresses.com)