



MODERN HYDRAULIC TECHNOLOGY

DIVISION OF NEWARK SPECIAL TECHNOLOGY, INC.

225 ton CLEARING [Stock Number 5255]

Model	H-225-54
Construction	side housing type
Stroke	76"
Shut height	35"
Daylight opening	111"
Bed area	54" L-R x 40" F-B
Ram diameters	(1) 10", (2) 6"

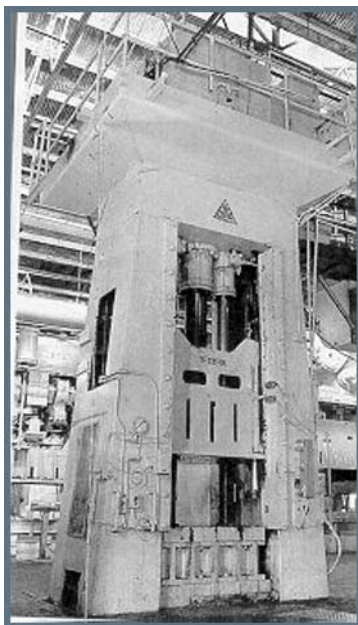
Gib guided

Power Unit:

Model DX15025 Oilgear hydraulic pump driven by 150 HP motor, 860 RPM, 480 volts.

Approximate weight 95,000 lbs

On location: Montclair, California



Phone (215) 467 9000 • Fax (215) 467 9220
1900 Kittyhawk Ave., Building 57 Bay – A, Philadelphia, PA 19112, USA
Visit our website at www.hydraulicpresses.com