



# Modern Hydraulic Technology

division of Newark Special Technology, Inc.

## 500 ton LAKE ERIE [Stock Number 5324]

Construction	4 posts, approximately 6-3/4" diameter each
Stroke	42"
Daylight opening	48"
Distance between posts	48-1/4" L-R x 48-1/4" F-B
Bed working area	48" L-R x 48" F-B or 48" x 72" side loading
Bolster on bed	60" L-R x 48" F-B x 6" thick

### Main ram:

25" diameter @ 2040 PSI working pressure  
(2) pullback cylinders: 6-3/4" diameter each

### With hydraulic cushion in base:

175 ton capacity  
15" diameter ram  
18" stroke  
40" x 40" cushion plate

Working height 33" (from floor level to top of bed)

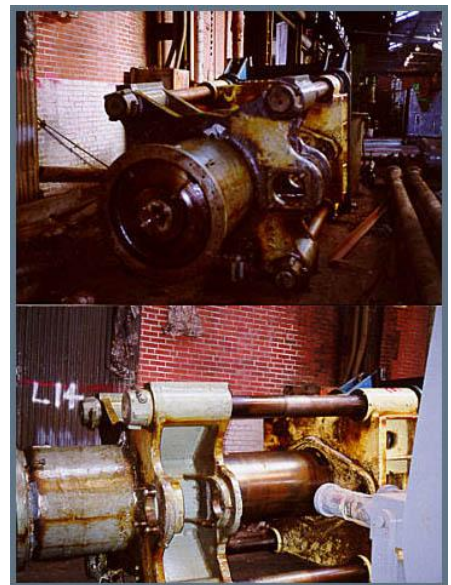
### Approximate overall dimensions:

Press proper: Height above floor level: 18' 7-1/2"

Depth below floor level 40"

--- PRELIMINARY SPECIFICATIONS ---  
Subject to confirmation at time of inspection.

F.C.A., loaded on trucks, at Philadelphia, PA



Visit our website at [www.modernhydraulic.com](http://www.modernhydraulic.com)