



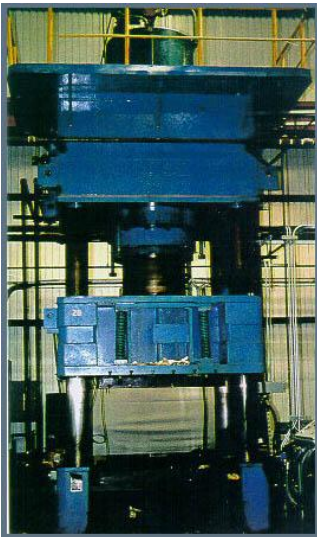
Modern Hydraulic Technology

division of Newark Special Technology, Inc.

1200 ton Verson [Stock Number 5769]

Model	1200-HD1-60-4P
Construction	4 post type, approximately 12" diameter each
Stroke	54"
Main ram diameter	35-1/2"
Daylight opening	57" with platens
Distance between posts	69" L-R x 40" F-B
Platen area	60" x 60"
Pump driven by 20 HP motor, 460 volts, 50 AMP	
Approximate weight	162,000 lbs
Approximate height above floor	19'6"

On location: Texas site



Visit our website at www.modernhydraulic.com