



Modern Hydraulic Technology

division of Newark Special Technology, Inc.

850 ton Lombard [Stock Number 5851]

Billet size	3" diameter x 14" long
Main cylinder stroke	38"
Container shift stroke	18"

Speeds:

Rapid advance - 550 IPM max.

Pressing - 180 IPM max.

Rapid return - 550 IPM max.

Hydraulics

High pressure water accumulation system and direct pumping oil

Hydraulic system for auxiliary functions.

Vickers PFB45FRF10 pump

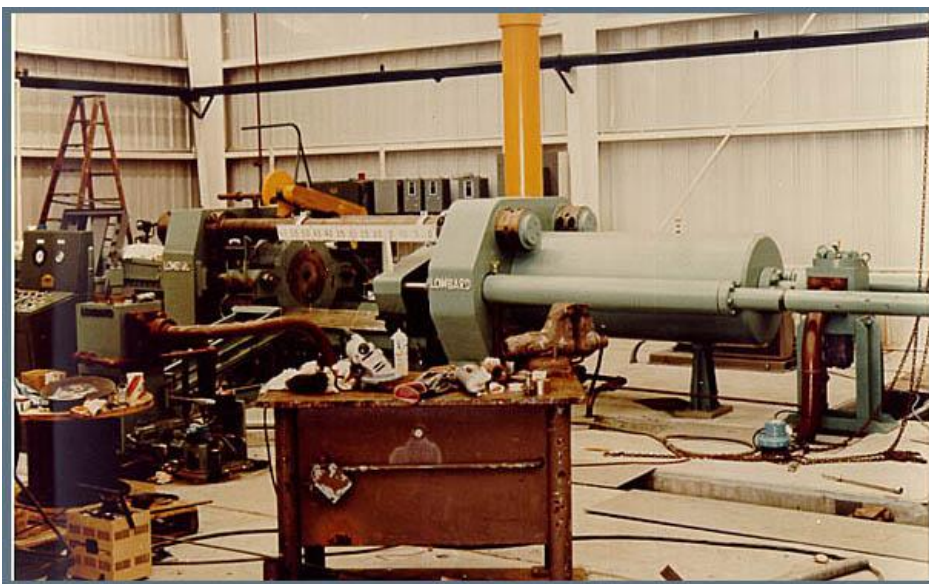
Dynex PF1002 pump

CAT Model 60241 pumps

(2) 50 HP motors: 1765 RPM, 230/460/3/60

(1) 75 HP motor: 1775 RPM, 230/460/3/60

F.C.A. Philadelphia, Pennsylvania



Visit our website at www.modernhydraulic.com