



Modern Hydraulic Technology

division of Newark Special Technology, Inc.

500 ton BALDWIN SOUTHWARK [Stock Number 228]

Construction 4 Posts, 7" Diameter Each
Stroke 20"
Daylight Opening 59"
Bed Working Area
126" L-R x 60" F-B Plus (2) Overhangs Front to Back of 36" L-R
x 30" F-B Each

Working Height 36"
Ram Slide 36" L-R x 45" F-B, "T" Slotted
Main Ram 29" Diameter, 500 Tons @ 1500 PSI
Pullbacks (2) 5" Diameter Each

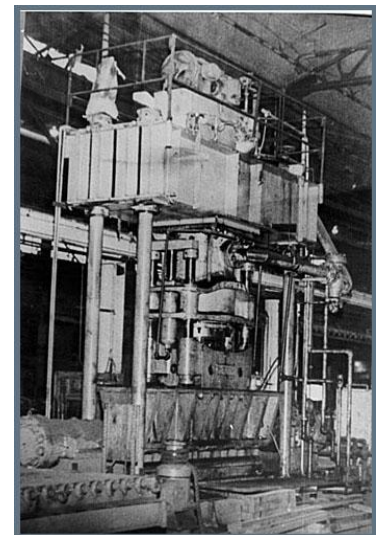
Horizontal Rams
(2) Stroke 24", Dia. 11" x 16", 150 Tons Each @ 1500 PSI

Hydraulics
40 HP, 440/3/60, 1200 RPM Motor Driving Vickers 49 GPM
Pump, Mounted on Press Crown

Controls Electric Push Button
Press Overall Height 22'9" x 23'6" x 10'
Total Weight 100,000 Lbs. Approx.

This machine is ideal for bending, straightening, and general metal forming work and is heavy enough to run at 750 tons which involves an additional high pressure pump @ 2300 PSI

F.C.A. LOADED Philadelphia, Pa



Visit our website at www.modernhydraulic.com