



MODERN HYDRAULIC TECHNOLOGY

DIVISION OF NEWARK SPECIAL TECHNOLOGY, INC.

2000 ton LAKE ERIE [Stock Number 388]

Construction 4 Posts, 13-1/2" Dia. Each
Stroke 48"
Daylight Opening Without Platens 87"
Platens (13) 86" L-R x 38" F-B x 3", Steam Heated
Daylight Openings Between Platens 4"
Distance Between Posts 92" L-R x 9" F-B
Rams
(2) 32" Dia. Each, Plus (2) Internal 6-1/2" Dia. Jack Rams

Prefill Valves (2) 8" Each

Hydraulic System

Mounted Below Floor, With Oilgear DX100-25 pump,
35 HP, 440/3/60, 870 RPM Westinghouse motor.

Speeds I.P.M. 248/105/250

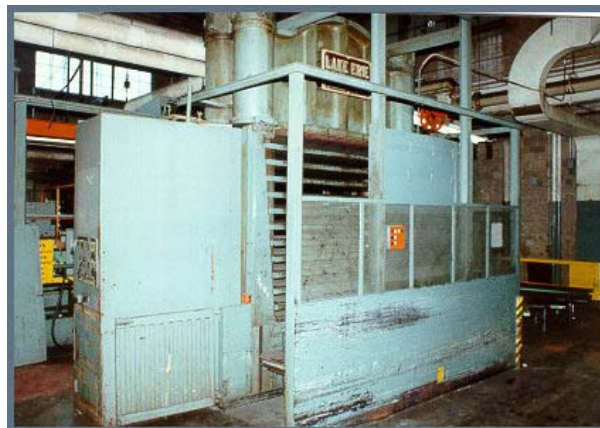
Press Dimensions

Height 14'8-1/2" Above Floor,
13'9" Below Floor x 20'2" L-R x 4'

Weight Approx.

Press Proper - 209,270 Lbs.
Power Unit - 4,500 Lbs.

F.O.B. Warehouse, Niagara Falls, New York



Phone (215) 467 9000 • Fax (215) 467 9220
1900 Kittyhawk Ave., Building 57 Bay – A, Philadelphia, PA 19112, USA
Visit our website at www.hydraulicpresses.com